



CATT FORCE

Contractor Assisted Testing and Training

DUNS: 116979843

CAGE CODE: 89X64

www.cattforce.com



**CATT
FORCE**

Contractor Assisted Testing and Training

Contractor Assisted Testing and Training



NCCO

NATIONAL CENTER FOR COMPLEX OPERATIONS

Complacency Kills "Don't Die Stupid"

"Under the Wire"



In God We Trust



Welcome to the CATT FORCE Contractor Assisted Testing and Training

CATT provides one-of-a-kind venues to facilitate the Special Operations community, Law Enforcement, 1st Responders and various other Military and Government Departments, Agencies and Contractors. CATT allows clientele the capabilities of full mission profile planning, training and execution.

Based on our strategic partnership agreements with the National Center for Complex Operations (NCCO), we offer world class, fully modernized, Military training facilities enabling CATT to support the ability to conduct full scale training in all areas, including Unconventional Warfare (UW). It is CATT's mission to accommodate our clientele and provide great customer service to ensure success in their training operations success in their training operations.

Kevin L. Presnell
President





Purpose and Scope

CATT FORCE offers one-of-a-kind, one-stop-shop resiliency training and education opportunities at multi-billion dollar venues, consisting of the following world-renowned Indiana facilities in America's Heartland:

- **Jefferson Proving Ground South (JPGS)**
(Private Training Facility)
- **Jefferson Proving Ground North (JPGN)**
- **Muscatatuck Urban Training Center (MUTC)**
- **Camp Atterbury Joint Maneuver Training Center (CAJMTC)**

CATT develops creative solutions for multi-disciplinary resiliency training challenges by customizing support for unique scenarios, while providing superior responsive customer service.





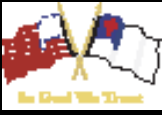
CATT FORCE Capabilities

- Establish a Regional Special Operations Capability (R-SOC) that supports full mission profile planning, training and execution.
- Provide for the conduct of realistic full scale training areas and facilities to develop and execute Tactics, Techniques and Procedures (TTP's).
- Enable Unconventional Warfare mission planning, training and execution with facilities and land use agreements on restricted land to support establishment of Unconventional Warfare Operational Areas (UWOA) and applicable mission sets.
- Establish a Technology Transition and Testing Cell (T3C) for operational equipment testing concurrent with full spectrum mission training and execution.

Public Sector Clientele

- Special Operations
- Law Enforcement
- Emergency Services
- US Military & NATO Forces
- State, Local & Tribal Government
- Government & Defense Contractors
- Federal Government Departments & Agencies





CATT Capabilities (continued)

Training Facilities

Capabilities:

- World-Renowned Urban Training Center
- Full mission profile planning, training and execution
- Operations planning center
- Mission isolation area
- Close Quarters Battle (CQB) / live fire / multiple target houses
- Fixed-wing / rotary-wing base operations with hangar / drop zones
- Unimproved airfield / 4 runways
- Live air bombing range
- Laser air bombing range
- Long range known distance targetry
- Military free fall and static line drop zones
- Unmanned Aerial Systems (UAS) training and execution area
- Close Air Support (CAS) training area / laser
- Multiple Shooting ranges / free fire zones
- 4 x 100 indoor range / Up to .50 cal capable
- Demolition / grenade range / breaching
- Off road tactical driving / IED avoidance
- Elevated shooting platform sniper
- Underground bunkers with rail access and truck docks
- Underground tunnels

Technology and Testing

Capabilities:

- CATT Jefferson Proving Ground South includes a defense contractor industrial/business park with existing businesses to support training operations such as a welding shop, diesel mechanic shop, fabrication shop, machine shop, Duke Energy and other miscellaneous businesses.
- Also CATT-JPGS has existing commercial rental buildings and land available for defense contractors and academia to manufacture and/or assemble for technology Transition and Testing Cell (T3C) for special operations equipment.
- In addition there are “build-to-suit” capabilities for new construction if existing buildings do not fit the customers’ requirements.
- CATT-JPGS also features rental facilities with rail access including underground bunkers with loading and unloading docks for rail and semi-truck.

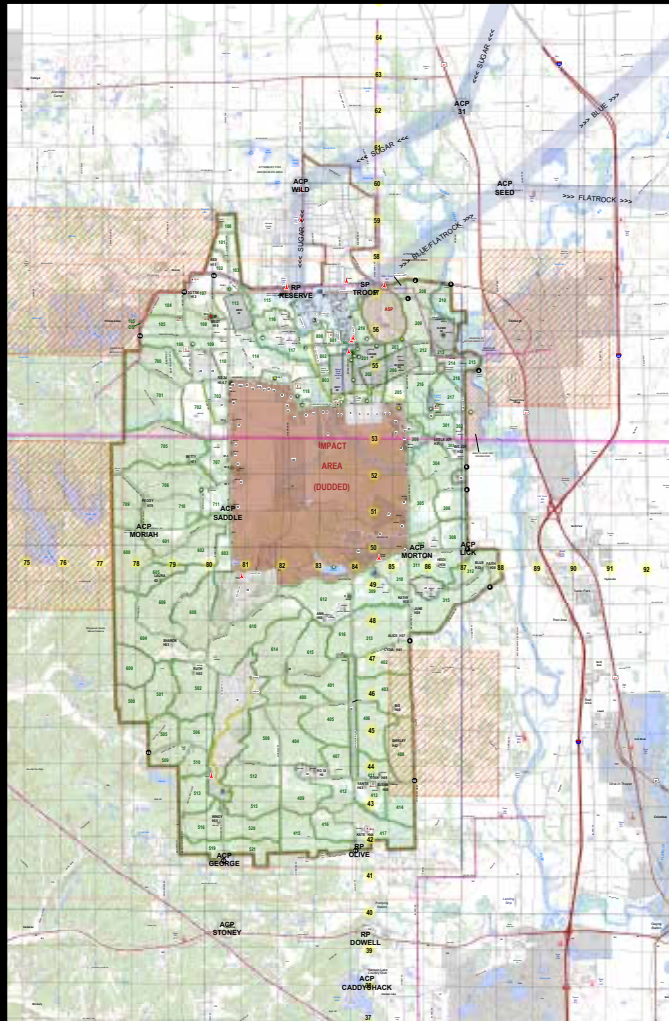


Indiana Regional Military Installations

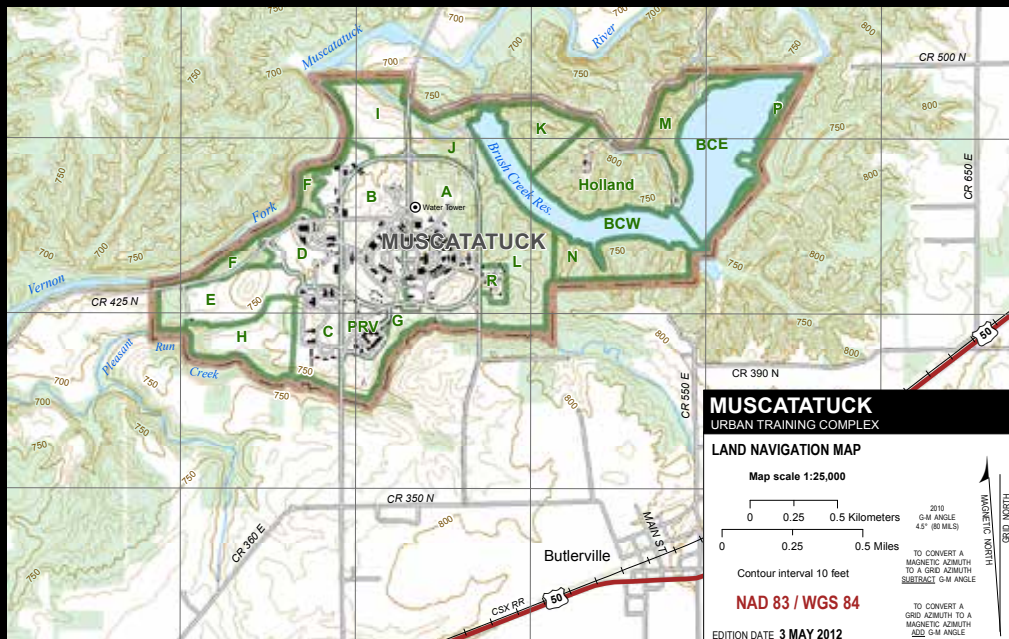


Training Areas

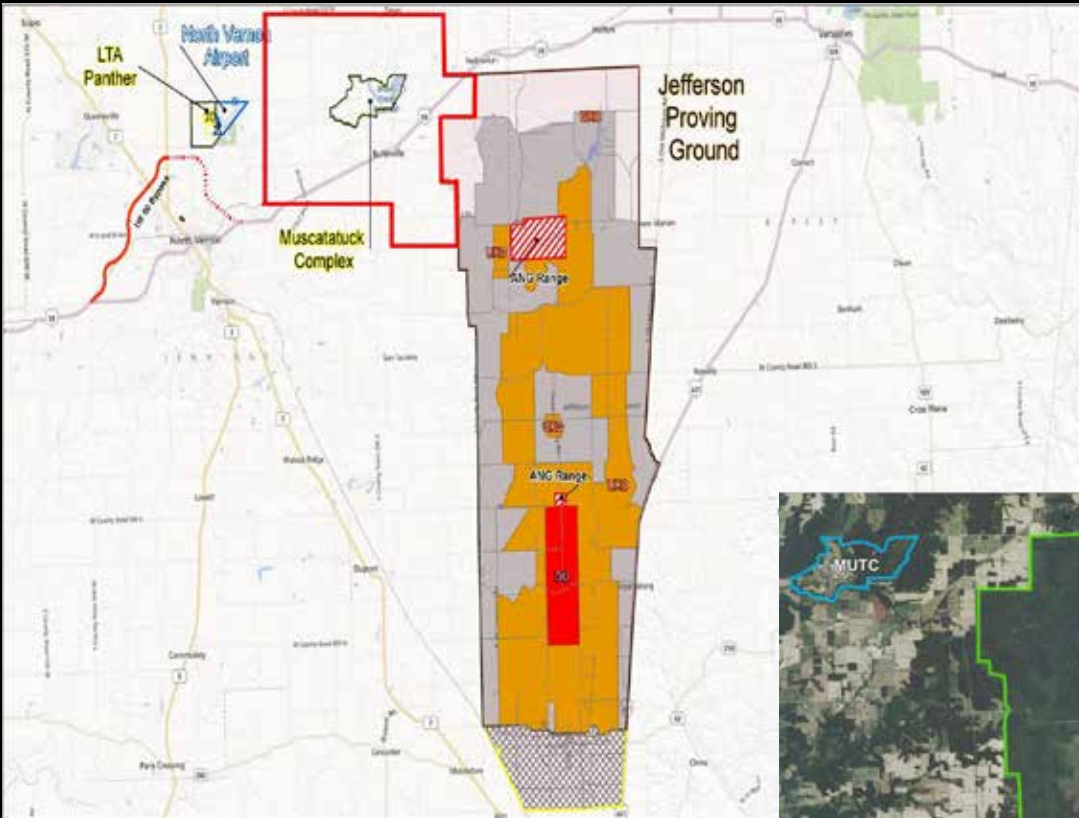
Camp Atterbury
Training Center
CAJMTC



Muscatatuck Urban Training Center (MUTC)



Jefferson Proving Ground North & South



- Live Air Bombing Range
- Laser Air Bombing Range
- 1,000 ac. Air to Ground Gunnery Impact Area
- 10,000 sq. ft. Old Timbers Lodge
- Old Timbers 180 ac. Lake





CATT FORCE
P. O. Box 123
Morgantown, IN 46160

Office: 317.497.0622
Toll Free: 855.728.4868
Fax: 800.381.5294

www.cattforce.com
info@cattforce.com

Feel free to join us on:

