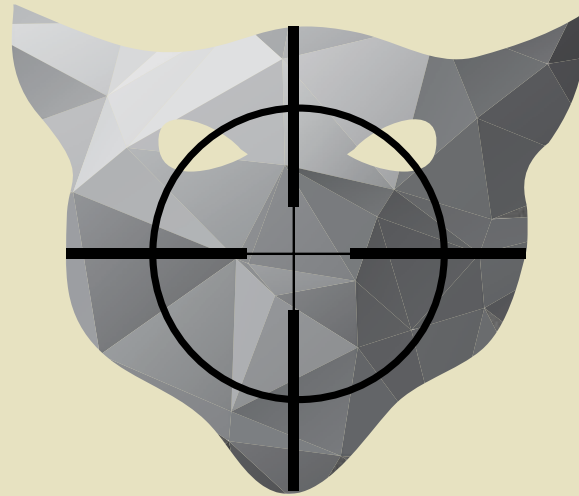




# Contractor Assisted Testing and Training



**CATT**  
**FORCE**

Contractor Assisted Testing and Training

---

## Protecting Our Homeland "Under the Wire"

Special Operations Forces (SOF) • Federal Government Departments & Agencies  
Government & Defense Contractors • State, Local & Tribal Government • US Military & NATO Forces  
Emergency Services • Law Enforcement • Homeland Security • Border Patrol

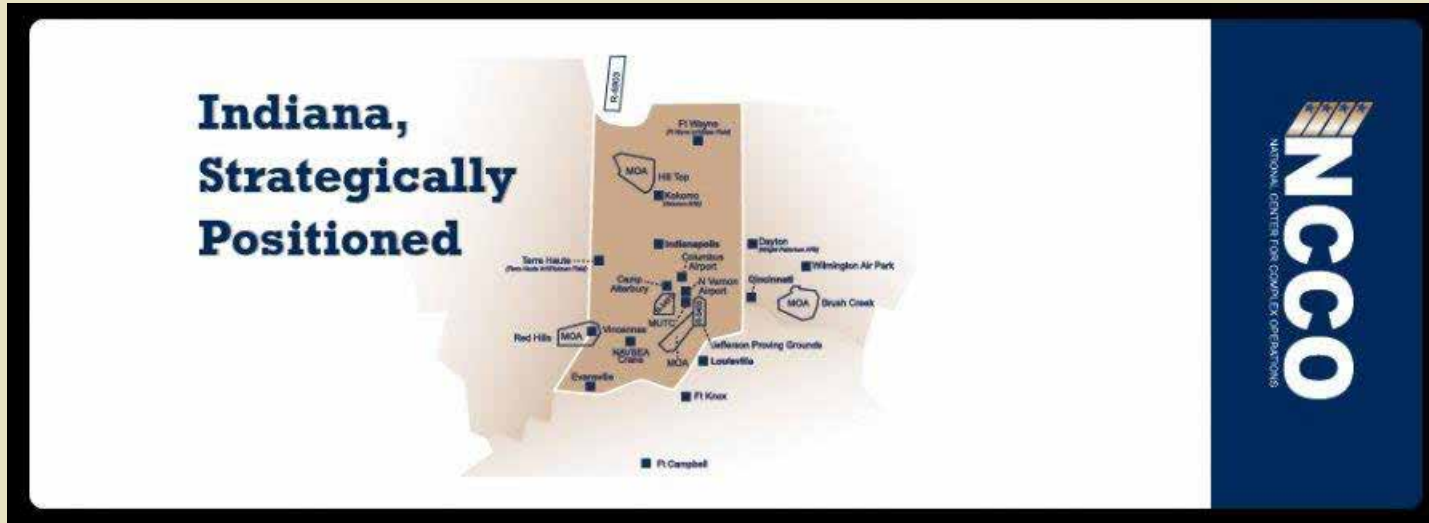
DUNS: 116979843

CAGE CODE: 89X64



# Indiana Regional Military Installations





Thanks to our strategic partnership agreement with the National Center for Complex Operations (NCCO), CATT is now approved to offer a comprehensive platform of resiliency training and educational opportunities, conducted at world class, fully modernized Military training facilities. The NCCO is an innovative mechanism for addressing national security needs while developing Indiana's economy. NCCO acts as a "one-stop-shop" to connect state, federal and private interests with services, programs and training and testing capabilities that will serve the U.S. Armed Forces and government agencies at all levels. NCCO is sponsored by the Indiana Economic Development Corporation (IEDC) and is a registered 501 (c) (3) hosted by Sagamore Institute.



# CATT FORCE Capabilities



## Objectives

- Establish a Regional Special Operations Capability (R-SOC) that supports full mission profile planning, training and execution.
- Provide for the conduct of realistic full- scale training areas and facilities to develop and execute tactics, techniques and procedures (TTP's).
- Enable Unconventional Warfare mission planning, training and execution with facilities and land use agreements on restricted land to support establishment of Unconventional Warfare Operational Areas (UWOA) and applicable mission sets.
- Establish a Technology Transition and Testing Cell (T3C) for operational equipment testing concurrent with full-spectrum mission training and execution.

## Training Facilities

- World-renowned Urban Training Center
- Full mission profile planning, training and execution
- Operations planning center
- Mission isolation area
- Close Quarters Battle (CQB) / live fire / multiple target houses
- Fixed-wing / rotary-wing base operations with hangar / drop zones
- Unimproved airfield / 4 runways
- Live air bombing range
- Laser air bombing range
- Long-range known-distance targetry
- Military free-fall and static line drop zones
- Unmanned Aerial Systems (UAS) training and execution area
- Close Air Support (CAS) training area / laser
- Multiple shooting ranges / free-fire zones
- 4 x 100m indoor range / up to .50 cal capable
- Demolition / grenade range / breaching
- Off-road tactical driving / IED avoidance
- Elevated shooting platforms / sniper
- Underground bunkers with rail access and truck docks
- Underground tunnels

## Technology and Testing

- Jefferson Proving Ground South (CATT-JPGS) includes an Industrial & Business Park with existing businesses to support training operations such as a welding shop, diesel mechanic shop, fabrication shop, machine shop, Duke Energy and other miscellaneous businesses.
- Also CATT-JPGS has existing commercial rental buildings and land available for defense contractors and academia to manufacture and/or assemble as a Technology Transition and Testing Cell (TS3) for Special Operations equipment.
- In addition there are "build-to-suit" capabilities for new construction if existing buildings do not fit the customers' requirements.
- CATT-JPGS also features rental facilities with rail access including underground bunkers with loading and unloading docks for rail and semi-truck.





# Purpose and Scope



CATT FORCE offers one-of-a-kind and one-stop-shop resiliency training and education opportunities at multi-billion dollar venues consisting of the following world-renowned Indiana facilities in America's Heartland:

- **Jefferson Proving Ground South (JPGS)**  
*(Private Training Facility)*
- **Jefferson Proving Ground North (JPGN)**
- **Muscatatuck Urban Training Center (MUTC)**
- **Camp Atterbury Joint Maneuver Training Center (CAJMTC)**

CATT develops creative solutions for multi-disciplinary resiliency training challenges by customizing support for unique scenarios, while providing superior responsive customer service.

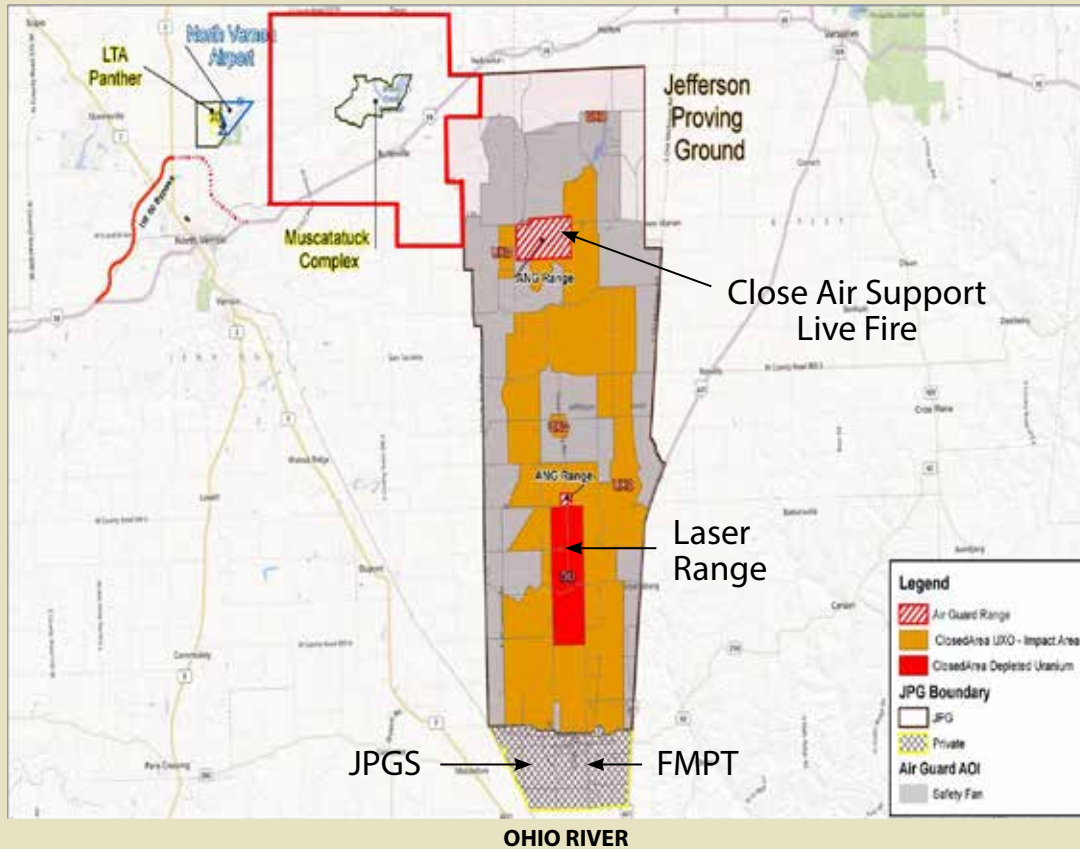
## Jefferson Proving Ground (JPG) - Madison IN

---

Jefferson Proving Ground (JPG) occupies 55,265 acres of land along U.S. Highway 421, north of the City of Madison, Indiana. JPG is a former U.S. Army Base used principally as a munitions testing facility of the Test and Evaluation Command of the United States Army Materiel Development and Readiness Command. JPG contains 379 buildings, 182 miles of roads, and 48 miles of boundary fence line. The facility is divided into a northern impact area and a southern cantonment area, separated by a firing line consisting of 268 gun positions for the testing of ordnance. This line runs east-west across the width of the facility.



# Jefferson Proving Ground North and South/MUTC Aerial Map



- Live Air Bombing Range
- Laser Air Bombing Range
- 1,000 ac. Air to Ground Gunnery Impact Area
- 10,000 sq. ft. Old Timbers Lodge
- Old Timbers 180 ac. Lake



# Training Facilities



## Jefferson Proving Ground South (JPGS) Former Military Base 4,300 ac. Private Tactical Training Area

---

### OVERVIEW

- 43 Miles of Roads
- 13.2 Miles of Perimeter Fence
- 13.2 Miles of Perimeter Roads
- Unimproved Airfield / 4 Runways / Hangar / Drop Zones
- Underground Bunkers with Rail Access and Truck Docks
- 1/2 Mile of Underground Tunnel
- On-site Sanitation Plant
- On-site 50' Water Tower
- 12 Miles of Railroad
- 40' Rappelling Tower
- 40' Shooting Tower
- Near Ohio River

### OPERATIONS

- Mobile Dynamic Target Negotiation Course (MDTNC)
- CQB Live Fire Hit House Area #1 and Hit House Area #2
- 4x100 Meter Indoor Shooting Range/Unimproved Up to .50 cal Capable
- 21 Second Drop Zone/Misc. Smaller Drop Zones
- Multiple Training Areas
- Room-to-Room Clearance
- Hi-Speed Driving School
- Railways and Railcars
- ATV Training Course
- Land Navigation
- Assembly Areas
- Bivouac Sites
- PT Areas





# JPGS On-Site Businesses/Services



- 
- Overnight Lodging (Barracks & VIP Housing)
  - Commercial Building Rental
  - Bunker Storage Rental
  - Ammo Storage Rental
  - Vocational Areas
  - Testing Facilities
  - Dining Facilities
  - Office Space
  - Classrooms



# JPGS On-Site Business/Services



- 
- Fabrication Shop
  - Diesel Mechanic Shop
  - Machine Shop
  - Welding Shop
  - Railroad
  - INDOT



# Training Facilities



## Jefferson Proving Ground North (JPGN) Military Base 50,700 ac.

---

- Live Air Bombing Range
- Laser Air Bombing Range
- 1,000 acre Air to Ground Gunnery Impact Area
- 10,000 sq. ft. Old Timbers Lodge
- Old Timbers 180 acre Lake



# Local Emergency Response Services and Retail



- 
- Fire/Rescue
  - Police
  - EMS
  - Hospital
    - AIR-EVAC - 5 minutes
    - Local - 5 Minutes
    - Trauma Care Level 1 - Cincinnati - Louisville
  - HAZMAT
  - Hotels, Restaurants, Stores -10 min. - Madison, IN

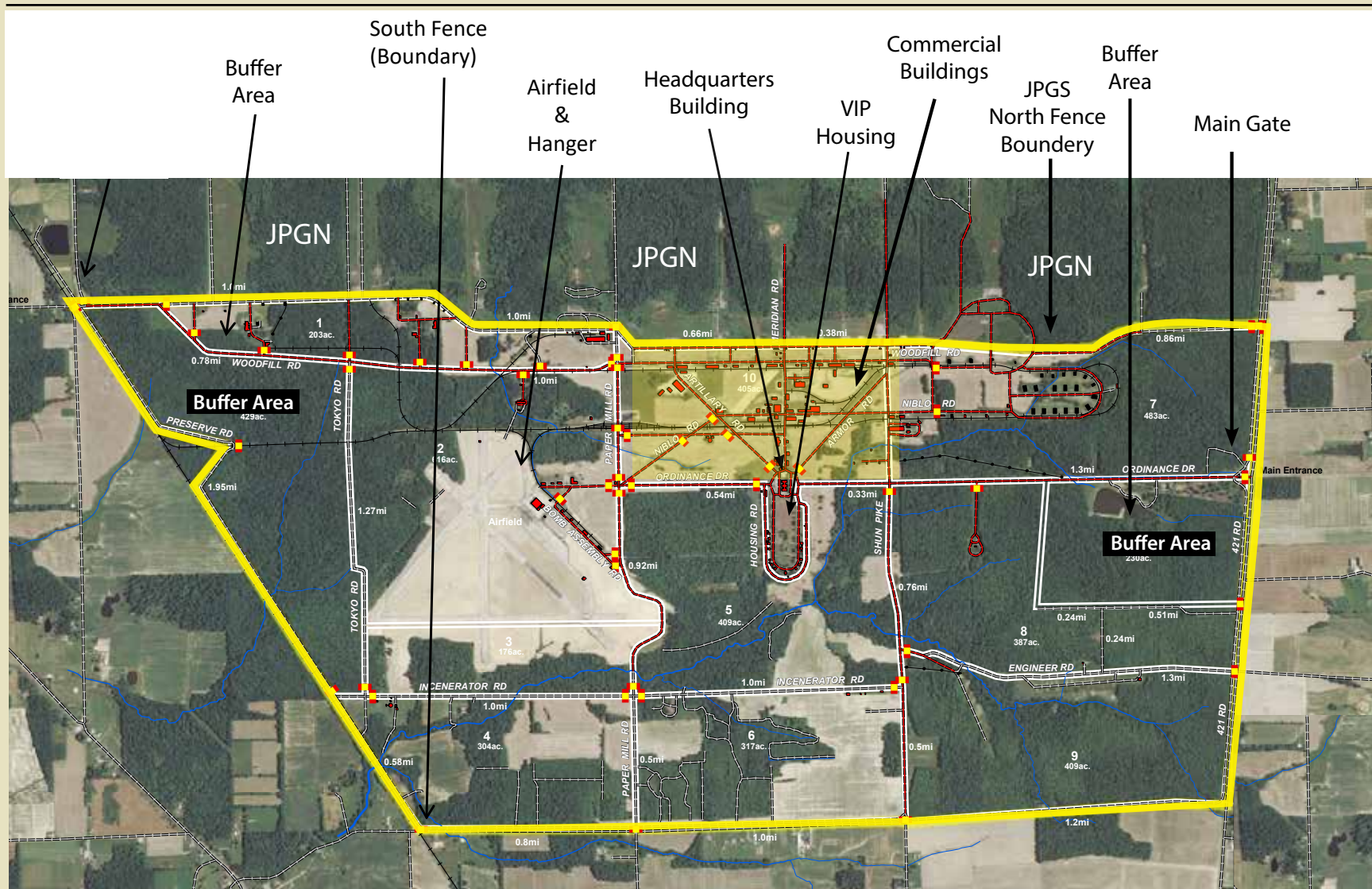


# Maps of JPG



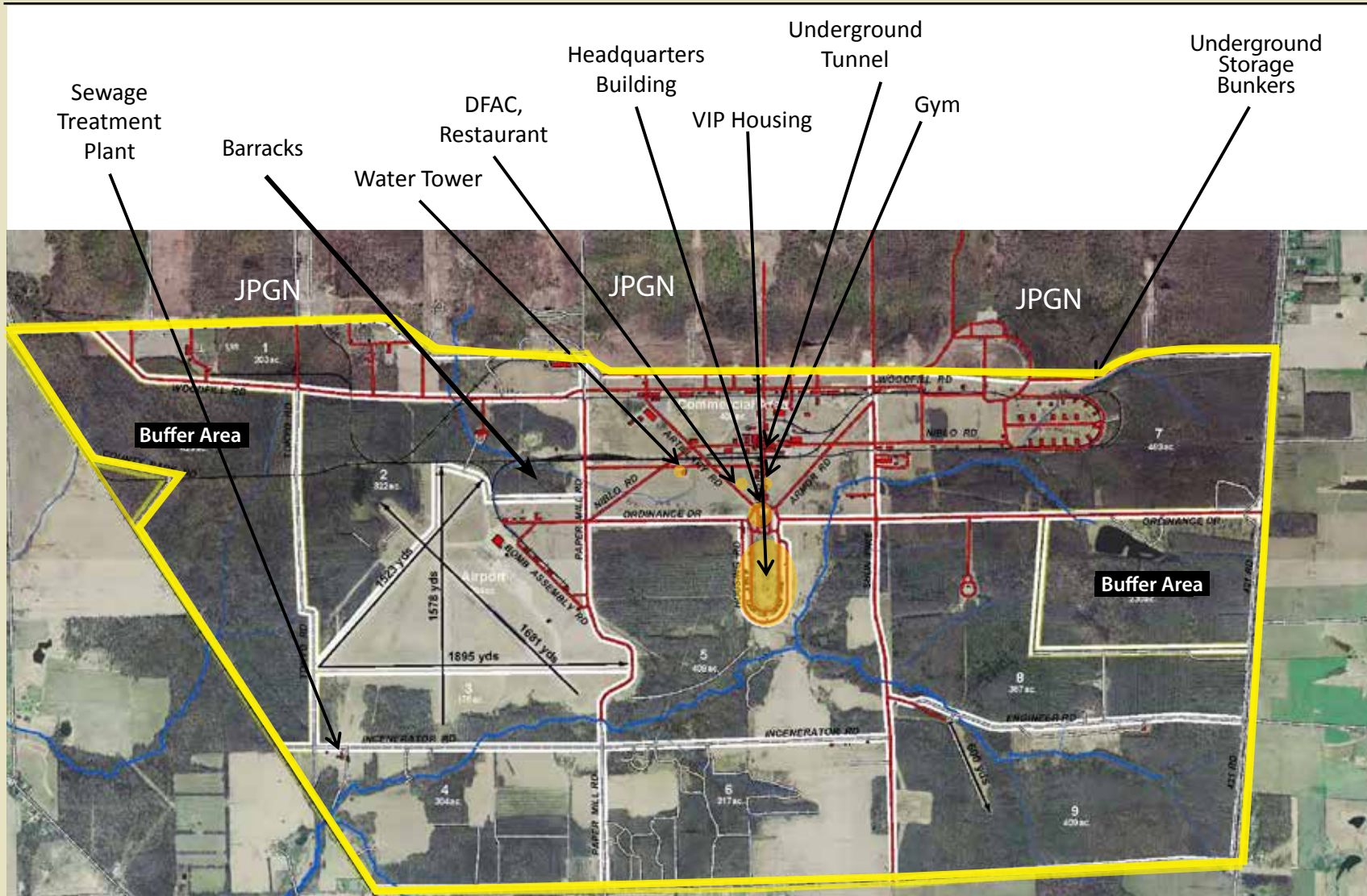
- 
- Orientation
  - Training Site Areas
  - McLaughlin Surveyed Drop Zone
  - Unimproved Air Field and Elevated Target Distances
  - R3403 A/B JPG MOA
  - Live Fire HIT Houses #1 and #2
  - Live Fire HIT House #1 (detail)
  - Live Fire HIT House #2 (detail)
  - 4 x 100m Indoor Range
  - 40' Tower Target Range
  - Mobile Dynamic Target Negotiations Course
  - Jefferson Proving Ground North Range Complex
  - Jefferson Proving Ground North and South/MUTC Aerial Map
  - Current Businesses in Industrial Business Park
  - Industrial Business Park, Testing and Vocational Expansion Area
  - Railhead

# JPGS Orientation



Indicates Gates

# JPGS Orientation continued

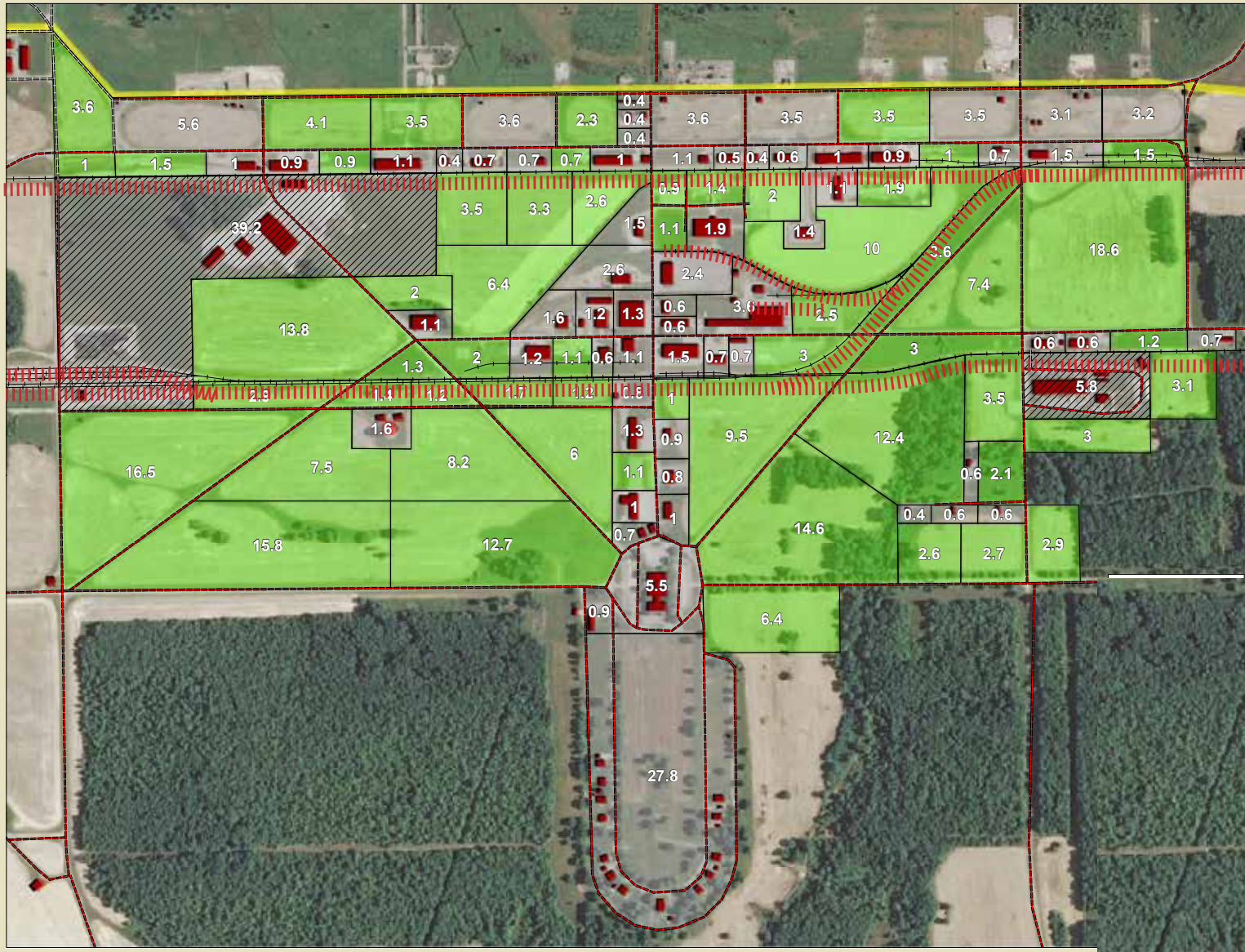




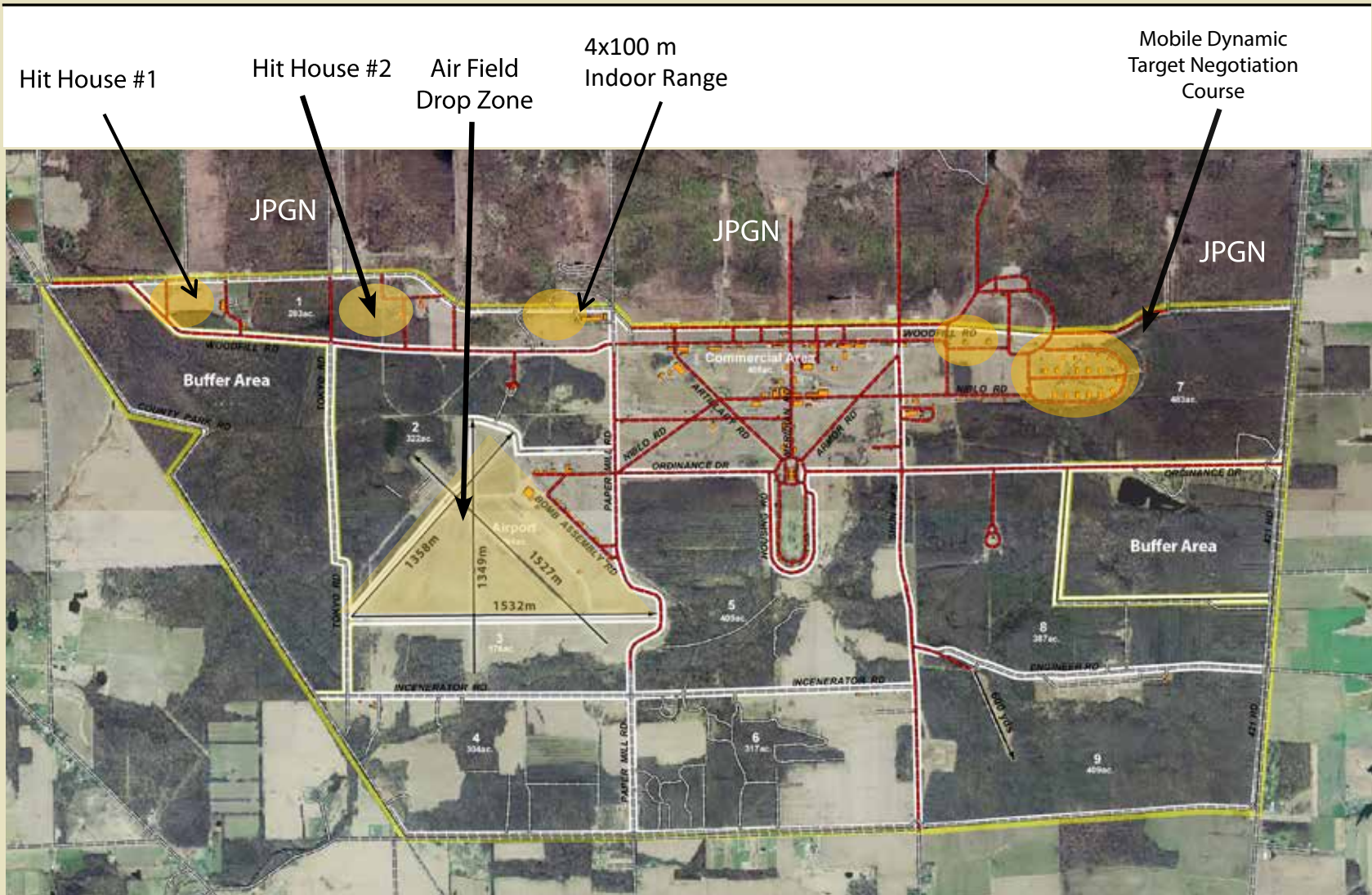




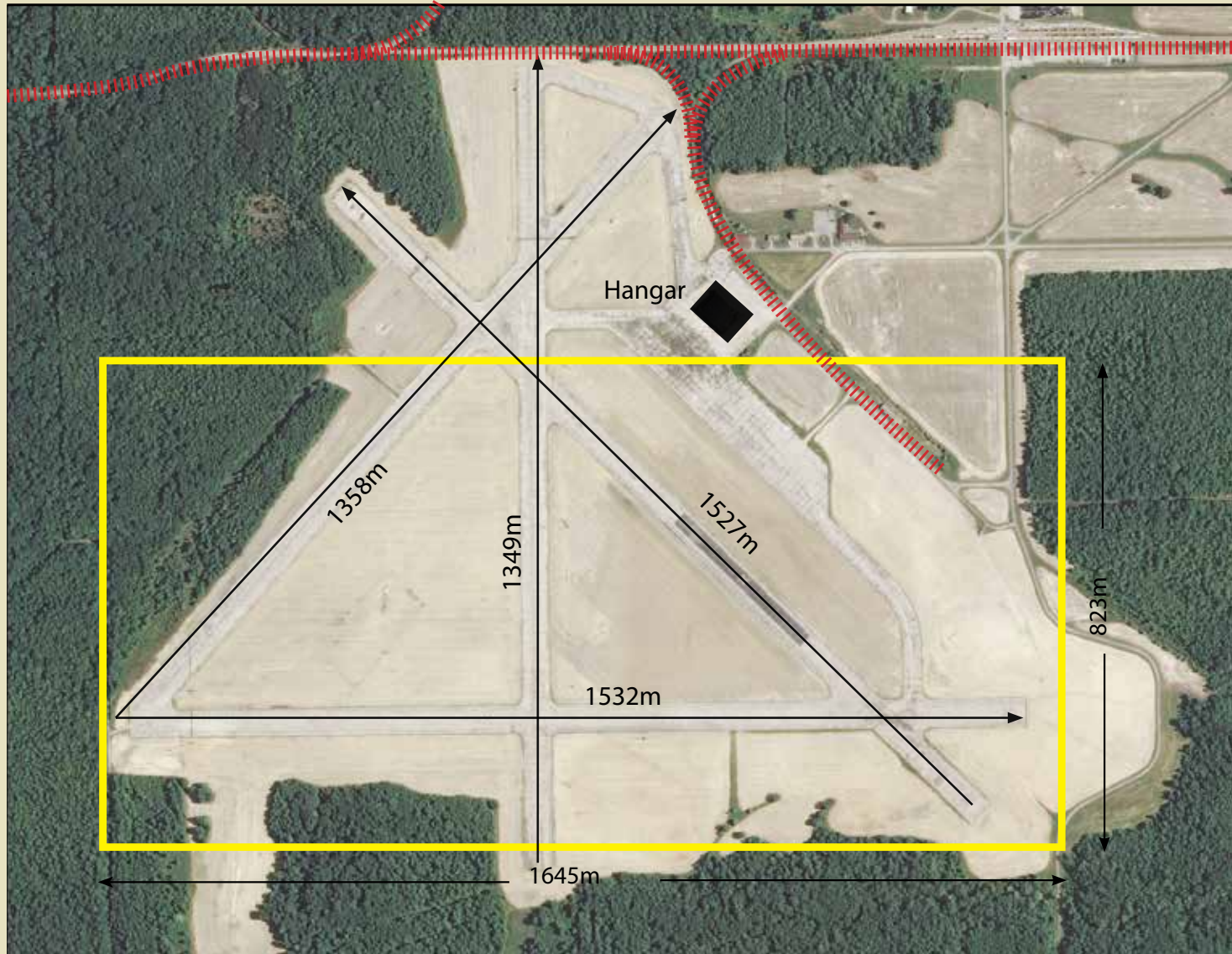
# JPGS Industrial/Business Park Available Acreage



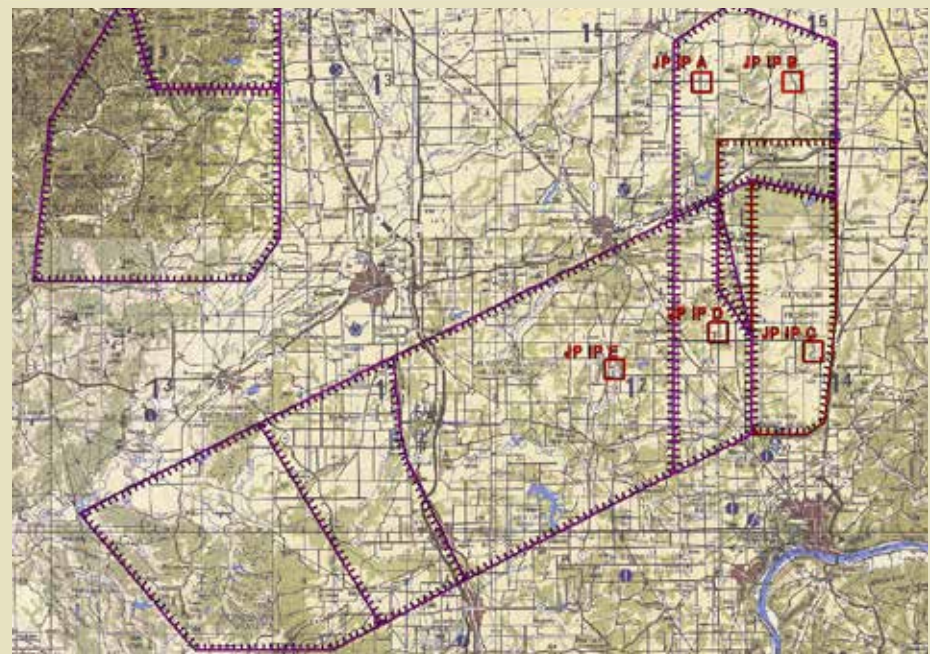
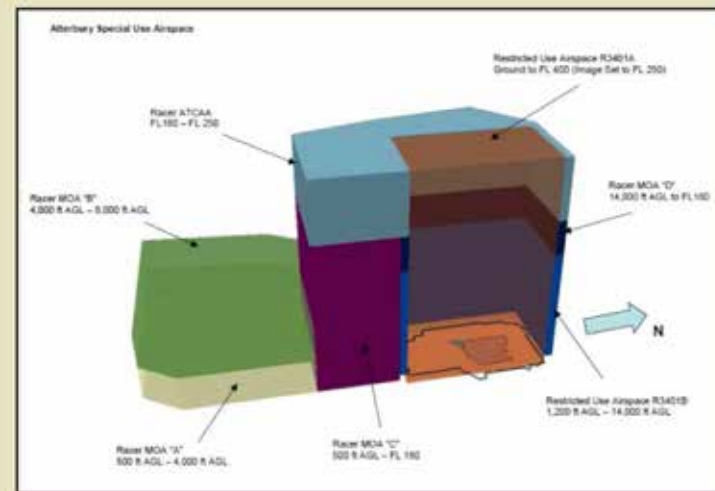
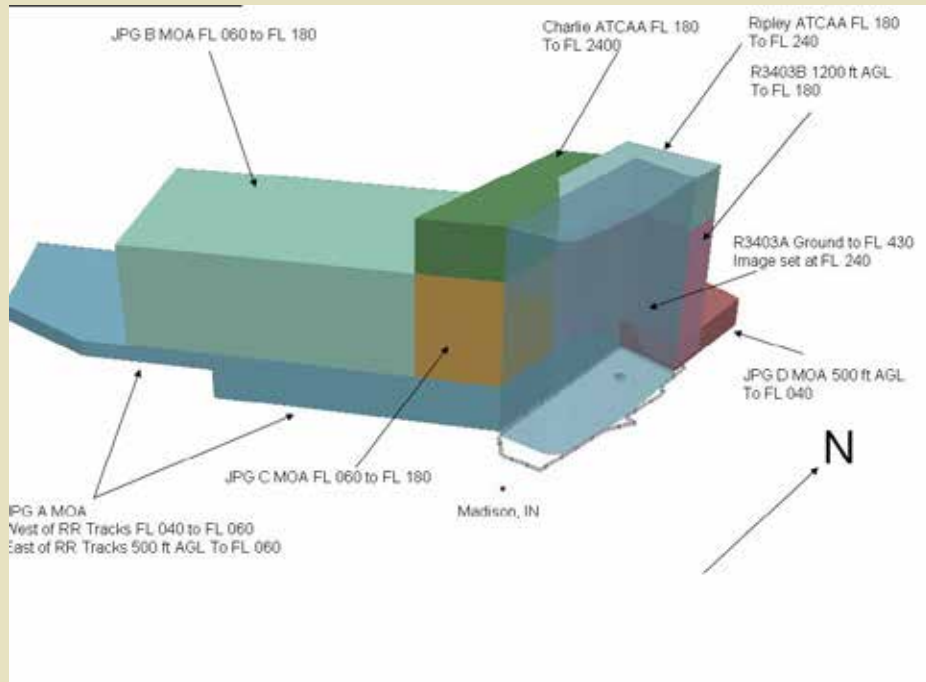
# JPGS Specialized Training Sites



# JPGS McLaughlin Surveyed Drop Zone

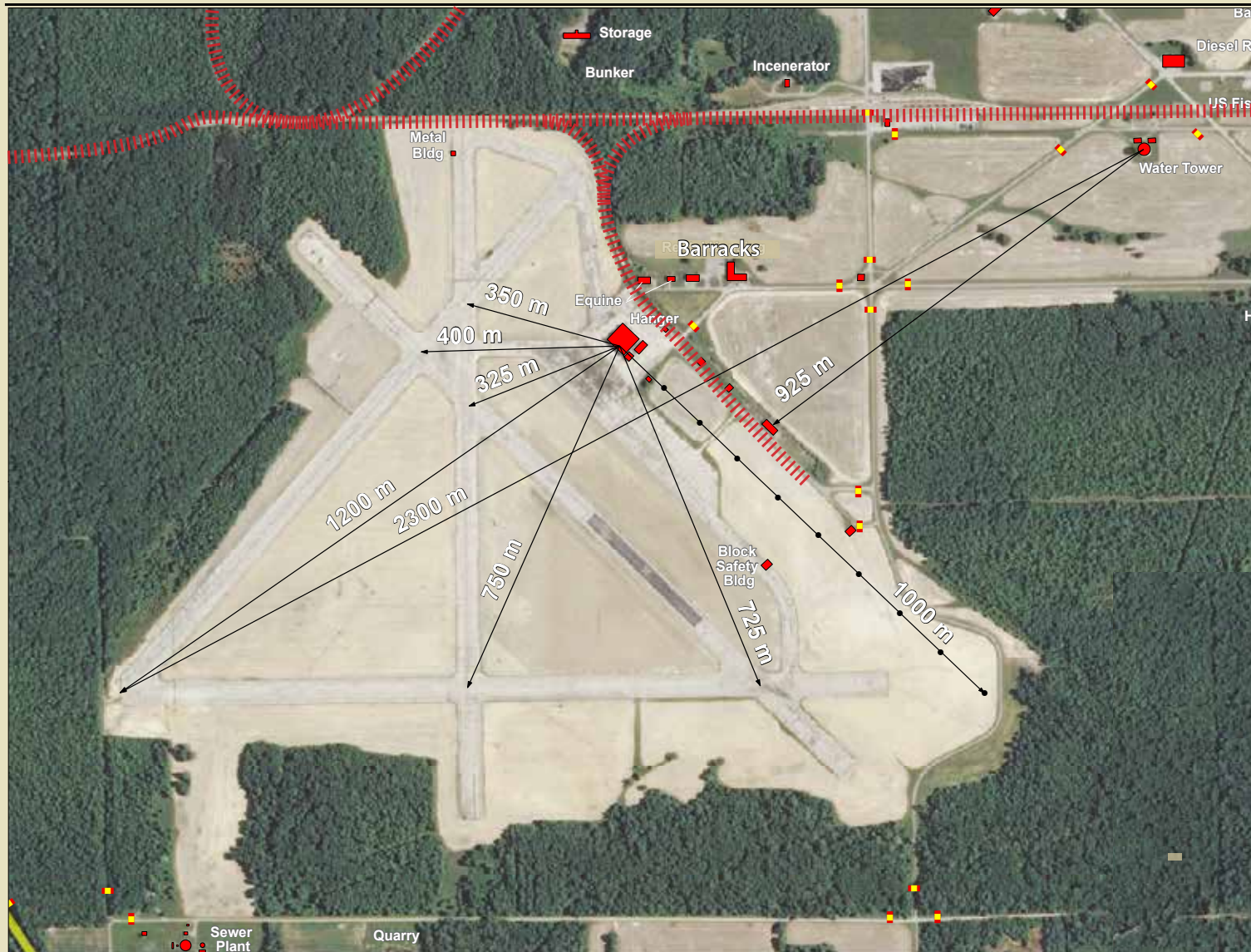


# R3403 A/B and the JPG MOAs

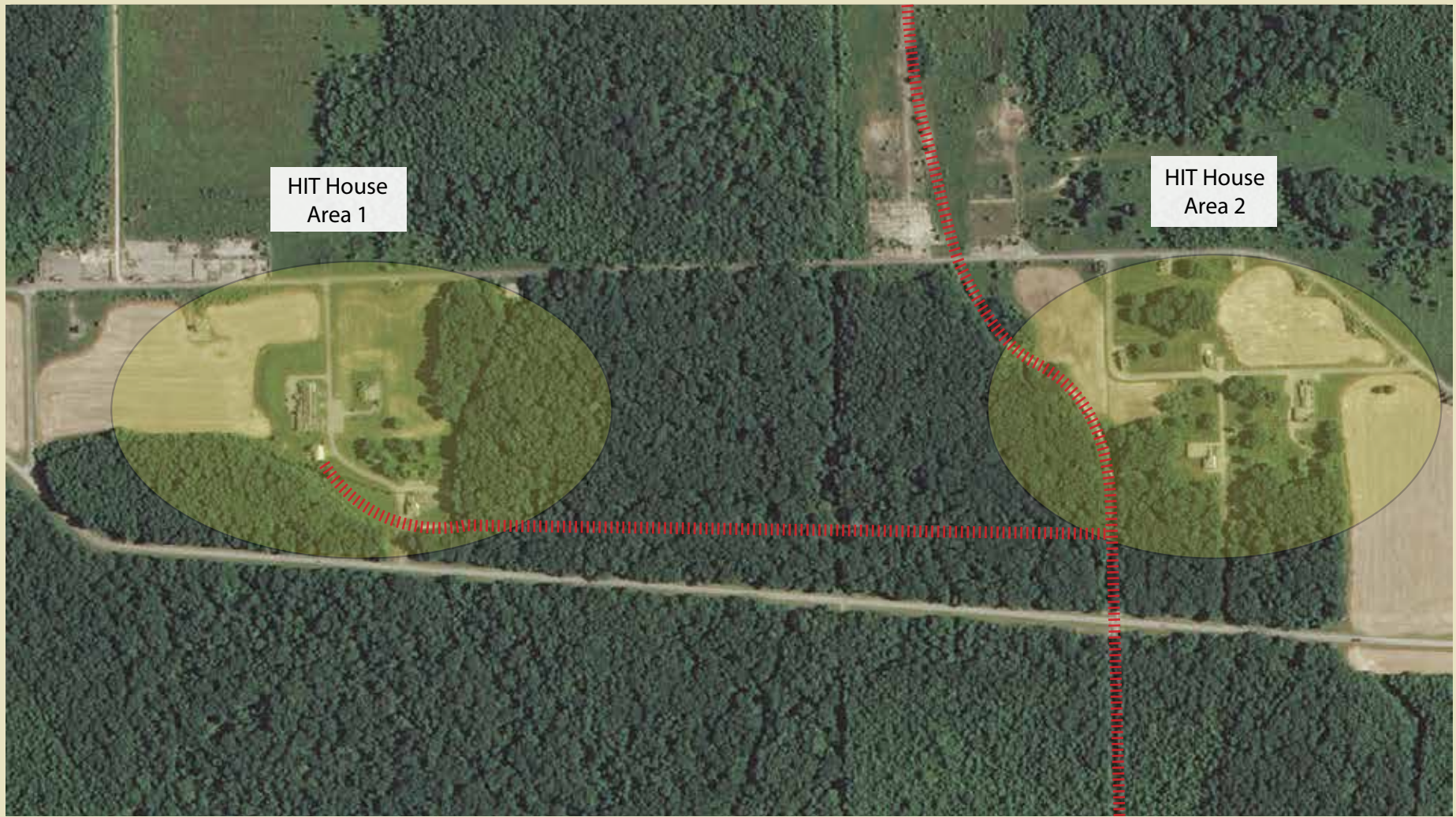




# JPGS Unimproved Air Field and Elevated Target Distances



# JPGS Live Fire HIT Houses #1 and #2

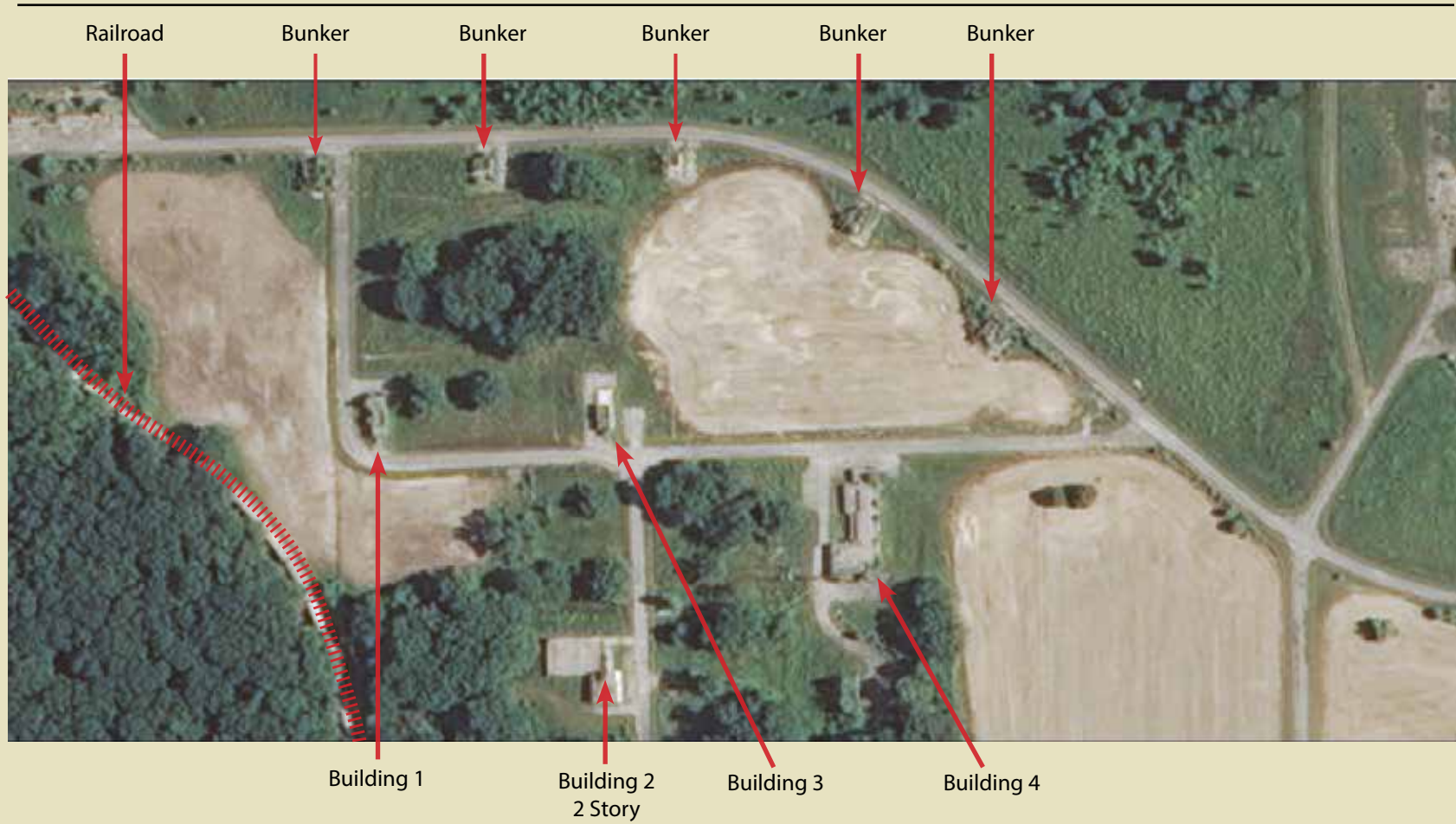




# JPGS Live Fire HIT House #1

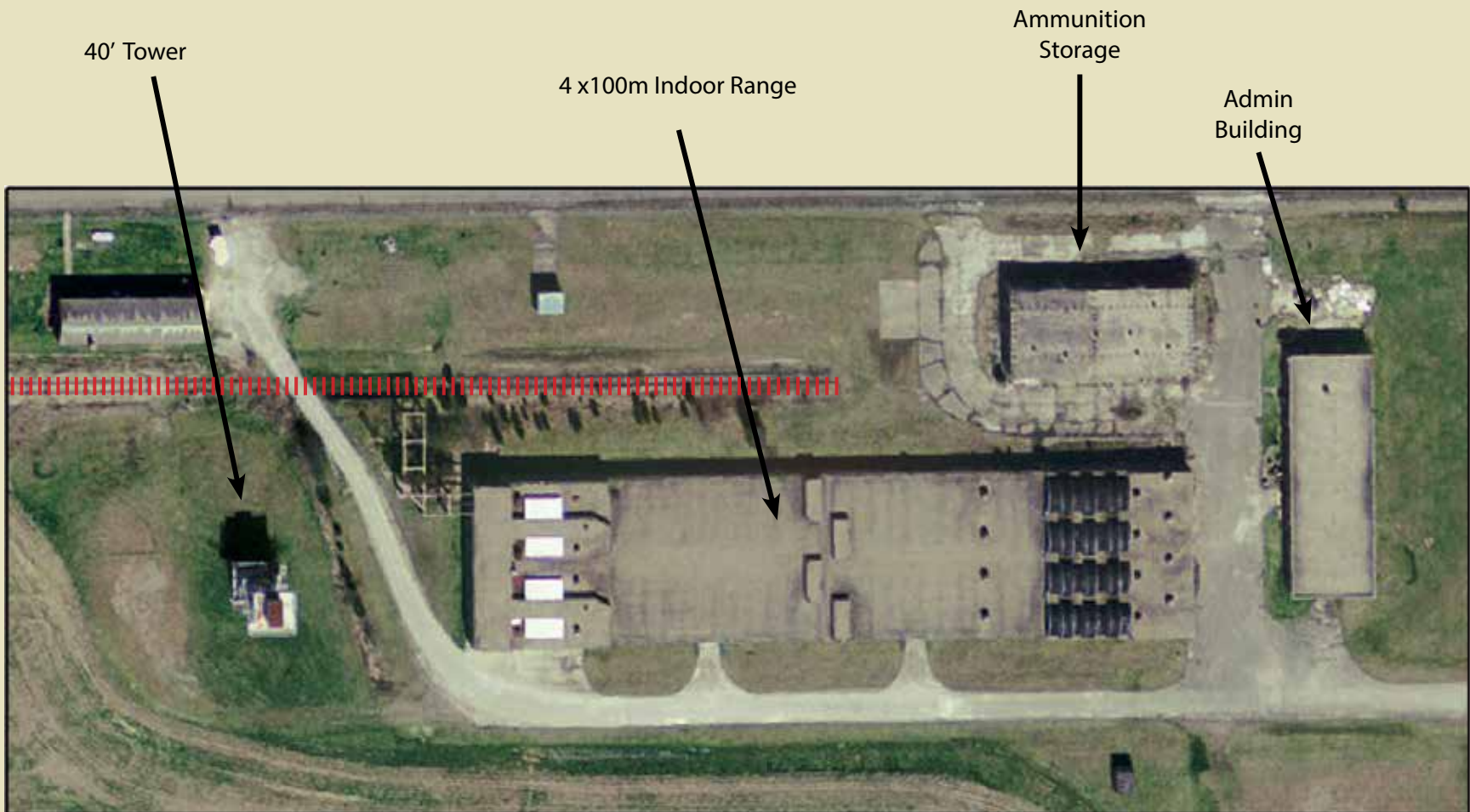


# JPGS Live Fire HIT House #2





# JPGS 4x100m Indoor Range





# JPGS 40' Tower Target Range



40' Tower

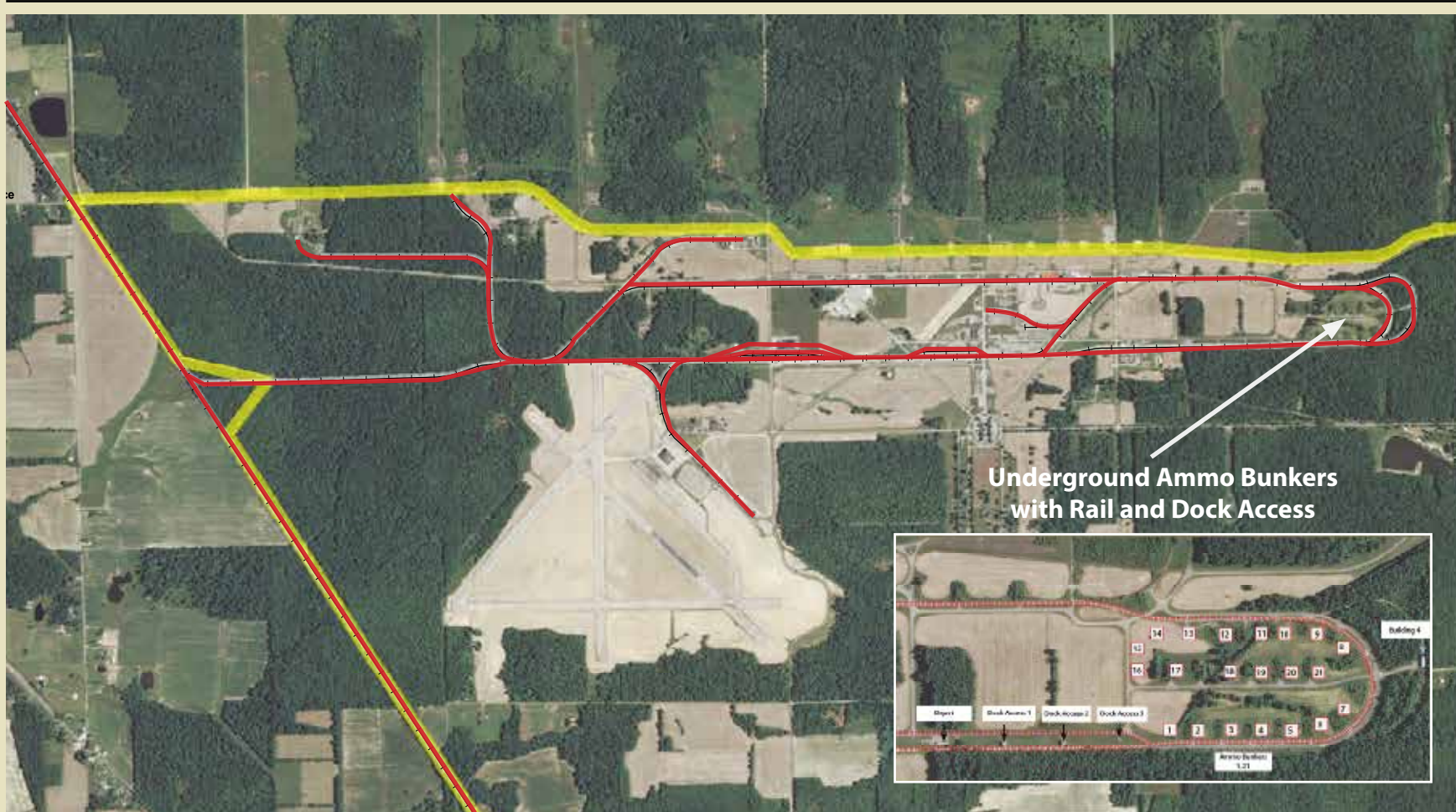




# JPGS Mobile Dynamic Target Negotiation Course



# JPGS Railhead



## Muscatatuck Urban Training Center (MUTC)

Consists of 1,000 acres, over 120 structures with over 2,000 rooms and a 180 acre reservoir in an isolated rural location, yet staged to replicate a Living, Breathing City (LBC) in a failed state. MUTC supports up to a Brigade-size element and specializes in a four dimensional training and testing environment: Ground/Urban, Airspace, Electro-Magnetic/Cyber and Human.

### Urban Terrain Zones

**Zone 1** – Industrial / Urban Canyon **Zone 2** – Educational **Zone 3** – Rural **Zone 4** – Municipal  
**Zone 5** – Rule of Law **Zone 6** – Residential

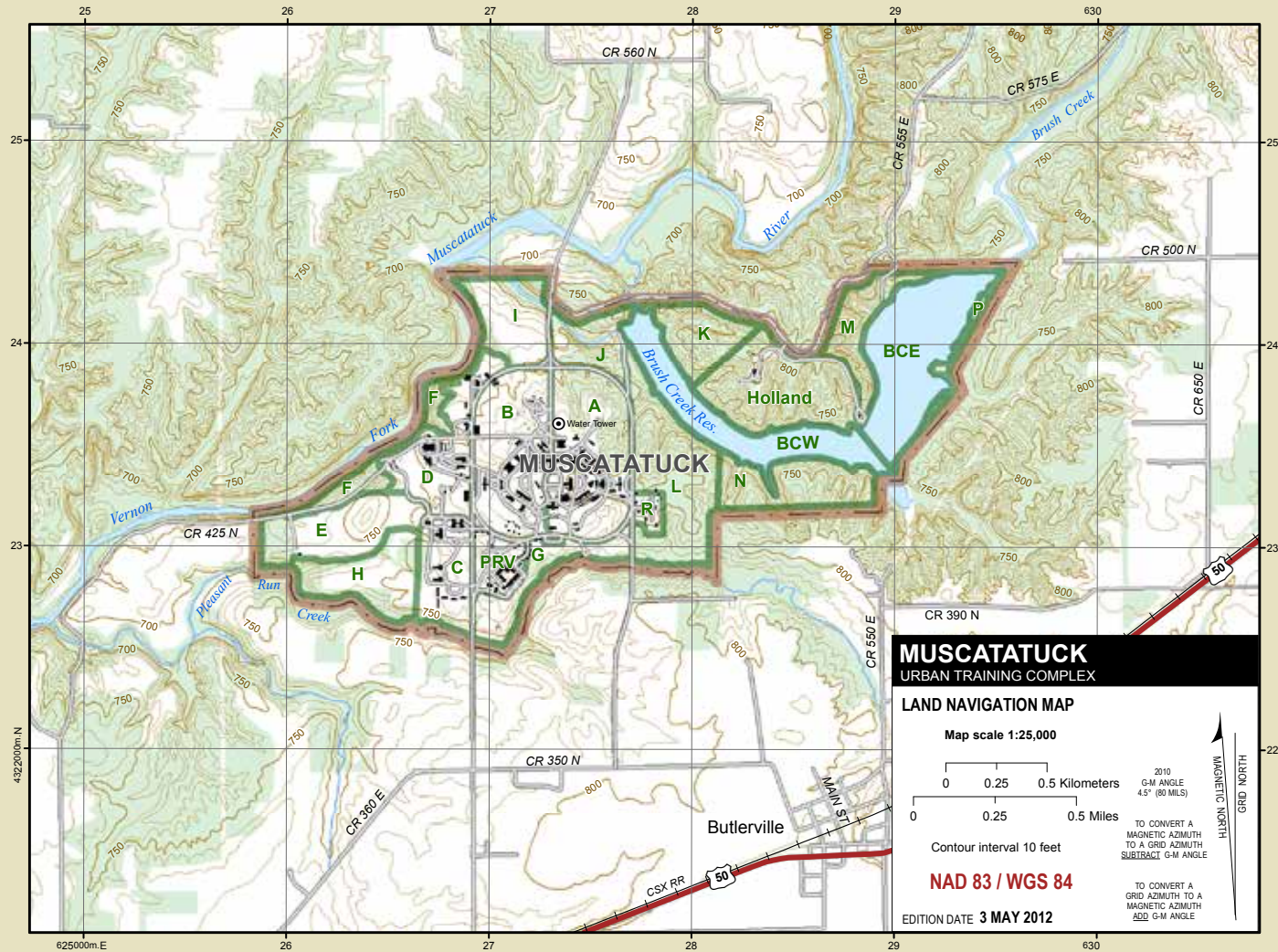
### Overview

- 2,000 + rooms
- 1 x 7 story building
- 1 x 5 story building
- 20 x 3 story buildings
- 16 x 2 story buildings
- 6 split-level buildings
- 14 single level buildings
- 850,000 sq. ft. of buildings
- 9 buildings with basements
- Over 120 training structures
- 9+ miles of streets and roads
- Over 1 mile of searchable tunnels
- All buildings are operational and fitted with functional equipment
- Fitness center
- Dining facilities
- Bed-space over 2,000
- Real effects such as fire - steam - sounds - smells - props
- Most interiors and exteriors are set up for full video observation





# Muscatatuck Urban Training Center (MUTC)



## Muscatatuck Urban Training Center (MUTC) Military Base - 1,000 ac. (Including FOB Panther - North Vernon Airport)

### Training Buildings

- Bank
- Hotel
- School
- Sawmill
- Hospital
- Embassy
- Junk Yard
- Overpass
- Jail/Prison
- Gas Station
- Townhouse
- Fire Station
- Courtroom
- Trailer Park
- Train Depot
- Oil Refinery
- Dormitories
- Lumber Yard
- Market Place
- Hotel Fire Trainer
- Flooded Town
- Urban Canyon
- Media Center
- Mock Villages
- Dining Facility
- Concrete Plant
- Cave Complex
- Business Office
- Subway Station
- Soccer Stadium
- Laundry Facility
- Religious Center
- Train Derailment
- 180 ac. Reservoir
- Fabrication Shop
- Collapsed Building
- UTM Shoot House
- Municipal Buildings
- Barn - Farm Animals
- Observation Tower
- High Rescue Trainer
- Concrete Rubble Pile
- Water Treatment Plant
- Governor's Residence
- JIEDDO Search Houses
- Steam Plant/ Power House
- Site Exploitation Complex
- Collapsed Parking Garage
- Single Family Dwellings
- 3rd World Country Market
- Parking Garage Rubble Piles
- Underground Tunnel System

### Services

- Auditorium
- Classrooms
- Video Service
- Contracting for Special Construction Needs
- Role Players / Props - COB's  
Civilians on the Battle Field / UW  
Unconventional Warfare





# Training Facilities



---

## Camp Atterbury Training Center:

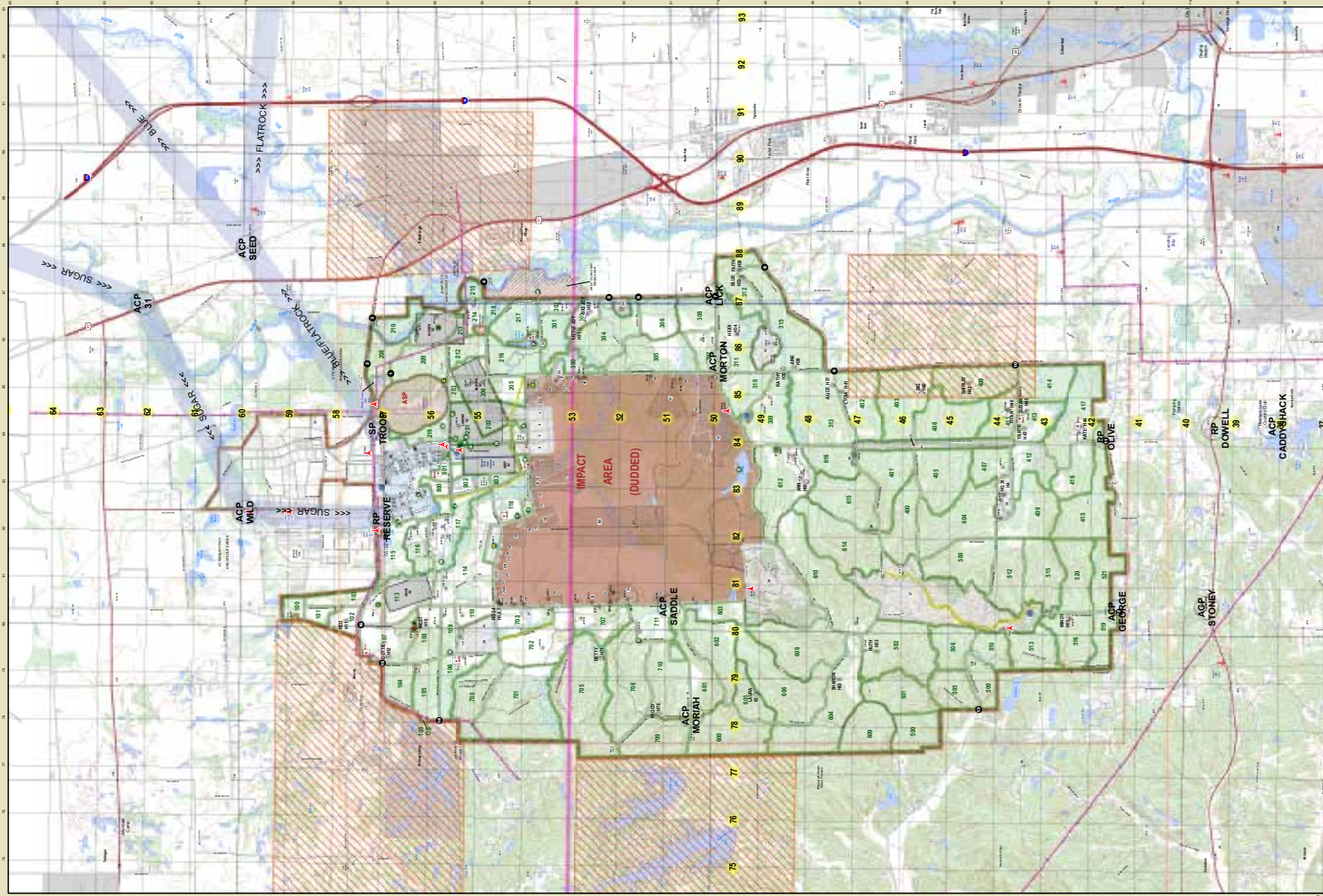
Over 34,000 acres to include over 26,000 acres for maneuver training space with an impact area of over 6,000 acres. Ranges and facilities support up to a Brigade-size element and a Division-level Warfighter exercise.







# Camp Atterbury Training Center CAJMTTC



## Camp Atterbury Military Base - 33,400 ac.

### Overview

- 10,000 Bed-space Barracks
- Hotel Style Rooms/Suites
- VIP Housing
- RV Campground
- Swimming Pool
- Tactical Gear Store
- Dining Options
- Chapel Services
- PX - ATM
- USO
- Fire Station
- First Aid Station
- Ambulance Service
- War Museum Indoor
- War Museum Outdoor
- Gymnasium / Fitness Centers
- Recreational Area and Cabins
- Barber Shop and Beauty Shop
- Off-site - Hotels - Restaurants - Shopping

### Training Facilities

- TADSS - Training Aids Devices Simulators and Simulations
- Simulators - Ground and Air Equipment - Cyber and Human
- Basic Marksmanship Ranges (24)
- Mounted Gunnery Ranges (4)
- Known Distance Ranges Capable of up to 2,000m (4)
- Collective Live Fire Ranges, Maneuver LFX (6)
- Automated Multi-purpose Range
- Demolition Ranges (Light/Heavy)
- IED Defeat Lanes (3)
- Sporting Clays / Trap
- Shooting Houses
- Shooting Towers
- Range Control
- Mock Villages - Cordon and Search, TCP Operations, Counter IED (9)
- Gas Chamber
- Meth LABS

- Rappelling Towers
- Land Navigation Courses (4)
- Hand to Hand Combat
- PT Physical Training
- PT Obstacle Course
- Helicopters
- Ground Vehicles and Equipment
- Airfield/Airstrip
- UAS Paved Runway with Hangar
- Drops Zones (6)
- Dedicated Training Areas
- Bivouac Areas
- FOBS #1 #2 #3

### Services

- Classrooms
- Auditoriums
- Conference Centers
- Role Players / Props - COB's Civilians on the Battle Field / UW Unconventional Warfare
- Contracting for Special Construction Needs





# CATT Contact Information



## Our Goal

Provide our customers with the most realistic and fiscally responsible operating environment with the highest quality facilities and customer support. We strive for best value, Hoosier hospitality and adaptability so that our customers focus their time and training towards mission success.

---

**CATT FORCE** - Contractor Assisted Testing and Training

**JPGS** - Jefferson Proving Ground South

P. O. Box 123, Morgantown, IN 46160

---

**Office:** 317.497.0622

**Toll Free:** 855.728.4868

**Fax:** 800.381.5294

---

[www.cattforce.com](http://www.cattforce.com)

[info@cattforce.com](mailto:info@cattforce.com)



**CATT**  
**FORCE**

Contractor Assisted Testing and Training

## Protecting Our Homeland "Under the Wire"



In God We Trust

Feel free to join us on:



8-7-20